

AdVital™ POWDER

Complete Nutrition IN JUST ONE SCOOP



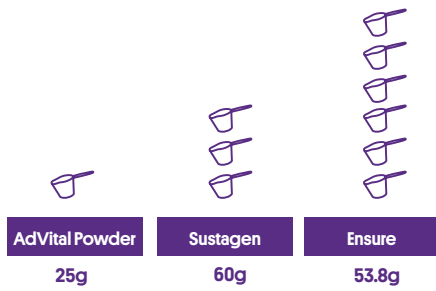
20 SERVES
PER CAN

15 GRAMS
PROTEIN

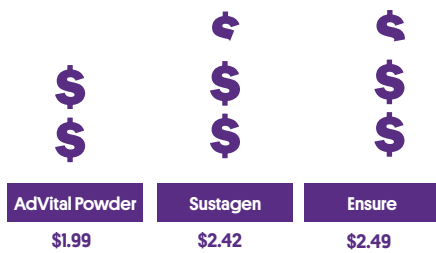
27 VITAMINS
& MINERALS



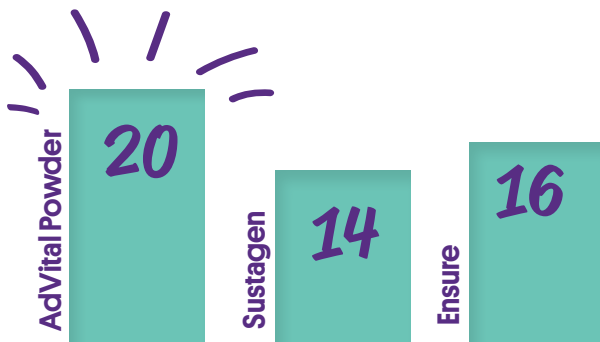
Scoops Per Serve*



Cost Per Serve^

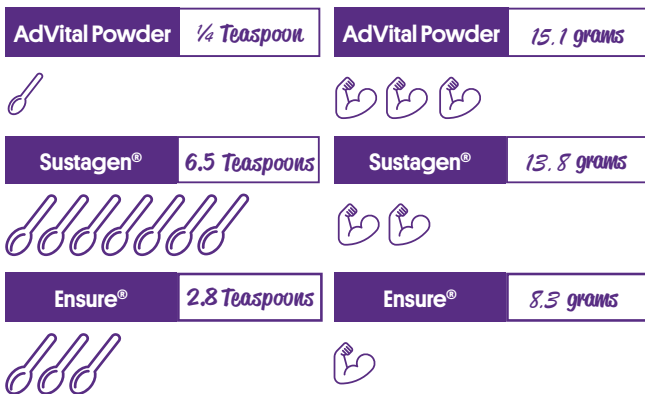


Serves Per Can*



Sugar Per Serve*

Protein Per Serve*



AdVital Comparison Table

| | AdVital™ | | | Sustagen® | | | Ensure® | | | |
|---------------------------|----------|-----------|---------|-----------|-----------|---------|---------|-----------|---------|---------|
| | Flavour | Chocolate | Vanilla | Neutral | Chocolate | Vanilla | Neutral | Chocolate | Vanilla | Neutral |
| Packaging Size | 500g | | | 840g | | | 850g | | | |
| Serves Per Pack | 20 | | | 14 | | | 16 | | | |
| Per Serve | | | | | | | | | | |
| Serve Size | 25g | | | 60g | | | 53.8g | | | |
| Scoops | 1 | | | 3 | | | 6 | | | |
| Protein | 15.5g | 15.1g | 15.1g | 13.8g | 13.8g | 13.8g | 7.95g | 8.55g | 8.3g | |
| Carbohydrates | 5.5g | 7g | 6.8g | 39g | 39g | 39g | 28.7g | 30.87g | 32.67g | |
| Sugar | 3.6g | 2.4g | 1.1g | 30g | 27g | 27g | 9.5g | 11g | 12.04g | |
| Teaspoons of Sugar | 3/4 tsp | 1/2 tsp | 1/4 tsp | 7.2 tsp | 6.4 tsp | 6.5 tsp | 2.2 tsp | 2.6 tsp | 2.8 tsp | |
| Sodium | 94mg | 67mg | 66mg | 160mg | 160mg | 160mg | 194mg | 194mg | 159mg | |
| Energy | 101kcal | 101kcal | 101kcal | 225kcal | 225kcal | 225kcal | 214kcal | 230kcal | 237kcal | |
| Vitamins & Minerals Count | 27 | | | 27 | | | 28 | | | |
| Low FODMAP Certified | Yes | | | No | | | No | | | |
| Australian Made & Owned | Yes | | | No | | | No | | | |

Suitable For Everyone

- Malnutrition
- Diabetes
- Certified Kosher Dairy
- Bone Health
- Renal Disease
- Certified Halal
- Healthy Aging
- Wound Care
- Gut Sensitivities

FlavourCreations.com.au
Sales@FlavourCreations.com.au
+617 3373 3000



*Compared to Sustagen Hospital Formula Neutral and Ensure Neutral. ^Cost per serve based on the RRP of Sustagen Hospital Formula Neutral and Ensure Neutral. All information is correct at time of publishing and subject to change without notice.

Suitable as a sole source of nutrition. Food for special medical purposes. Formulated to provide protein, energy, vitamins, and minerals for medical conditions where nutritional needs cannot be met by diet modification alone. Use under medical supervision. Not for parenteral use. Not suitable for children under 1 year of age. Monash University has assessed this product as being low in FODMAPs only. One serving of this product is low in FODMAPs.